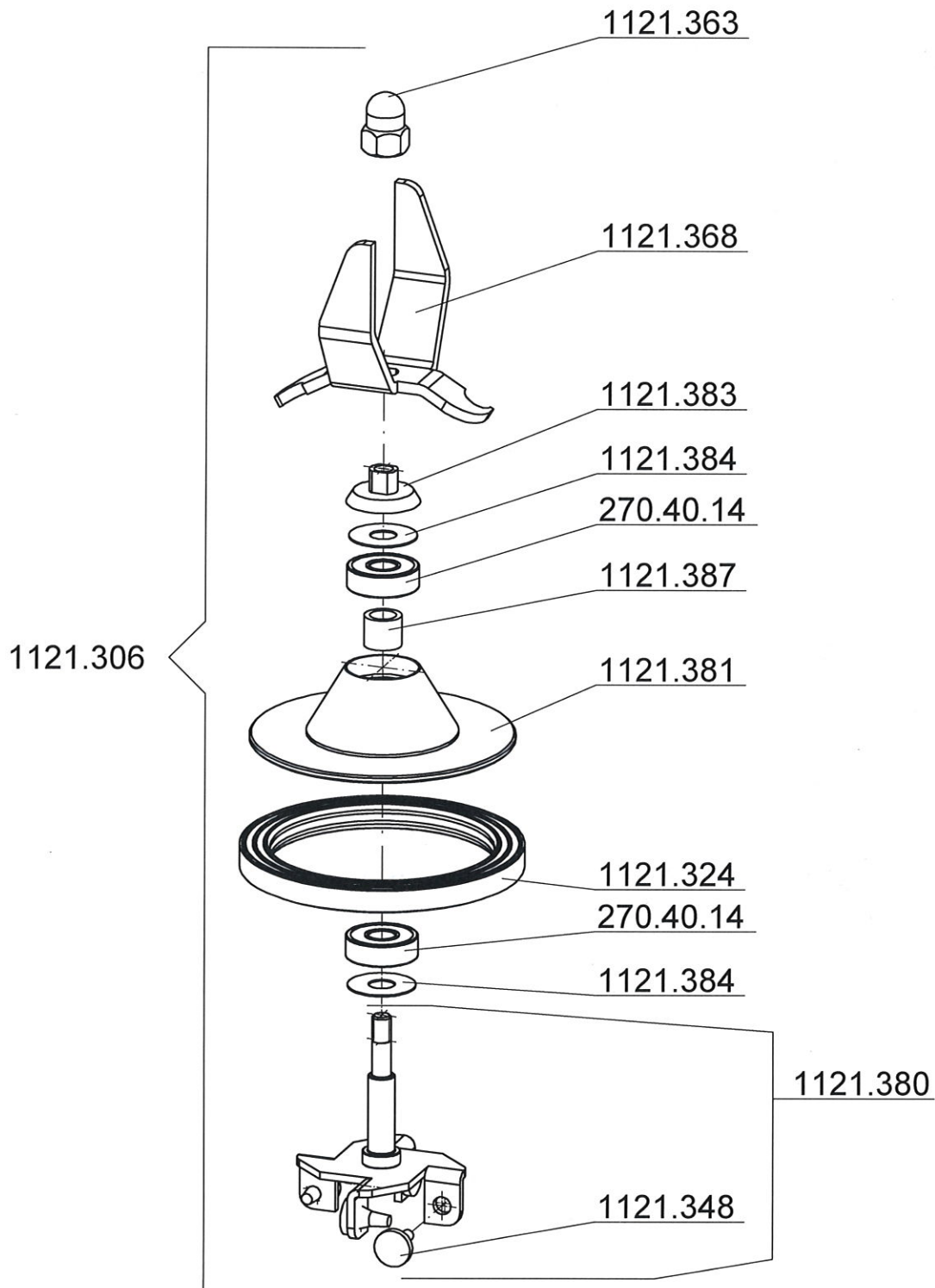


REP-GT-GT95-1120-6-DE-EN-FR

**8. 1121.306 MK2 Messer kpl. „HighPower“**  
**MK2 Knife asm. „HighPower“**  
**MK2 ens. couteaux „HighPower“**



**8. 1121.306 MK2 Messer kpl. „HighPower“  
MK2 Knife asm. „HighPower“  
MK2 ens. couteaux „HighPower“**

Art.Nr.	Bezeichnung	Designation	Désignation	St/Qte
1121.324	MK Dichtungsring	MK gasket	MK joint	1
1121.363	MK Hutmutter h=16mm	MK hex domed nut h=16mm	MK ecrou borgne h=16mm	1
1121.368	MK Messerklinge „HighPower“	MK cutter blade „HighPower“	MK couteau „HighPower“	1
1121.380	MK2 Messerwelle kpl	MK2 knife shaft assembly	MK2 ens. arbre-lame	1
1121.381	MK2 Messerträger kpl	MK2 knife holder asm.	MK2 ens. porte-lames	1
1121.383	MK2 Deckscheibe	MK2 cover disc	MK2 disque de recouvrement	1
1121.384	MK2 Distanzscheibe d7,1/17,9x0,4	MK2 shim washer	MK2 rondelle d'épaisseur	2
1121.387	MK2 Distanzhülse di7/10x8,3mm	MK2 spacer sleeve di7/10x8,3mm	MK2 douille d'écartement	1
270.40.14	Rillenkugellager 607-2RS InoxNS7	ball bearing 607-2RS inox NS7	roulem. à billes 607-2RS inoxNS7	2

Art.Nr.	Bezeichnung	Designation	Désignation	St/Qte
1121.348	MK Stossdämpfer d10x13mm schwarz	MK shock absorber d10x13 black	MK amortisseur d10x13 noir	4